

InTe  po CT 

Powered by **wise systems** 

Driver App Overview

Department:

Product Management

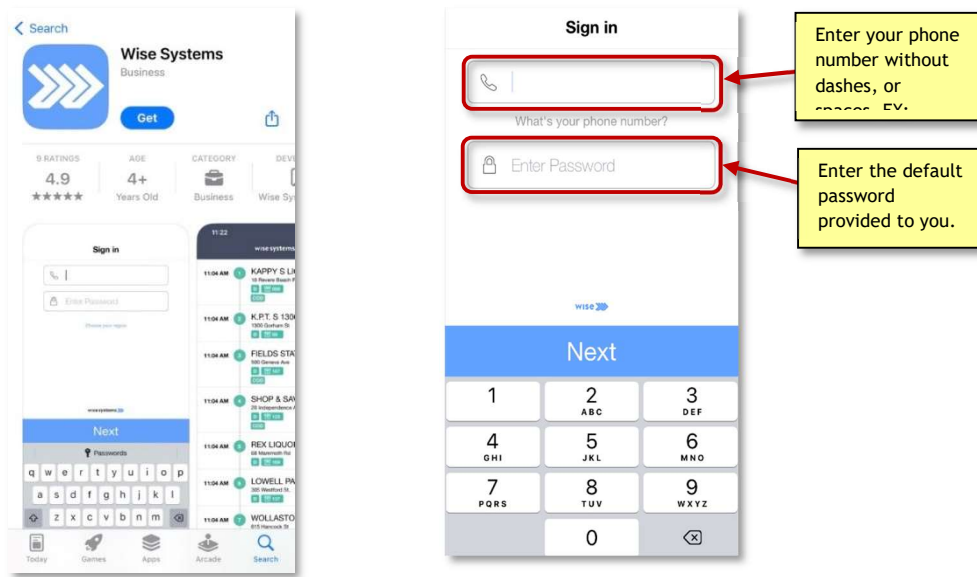
Last Updated:

5/7/2025 1:06 PM

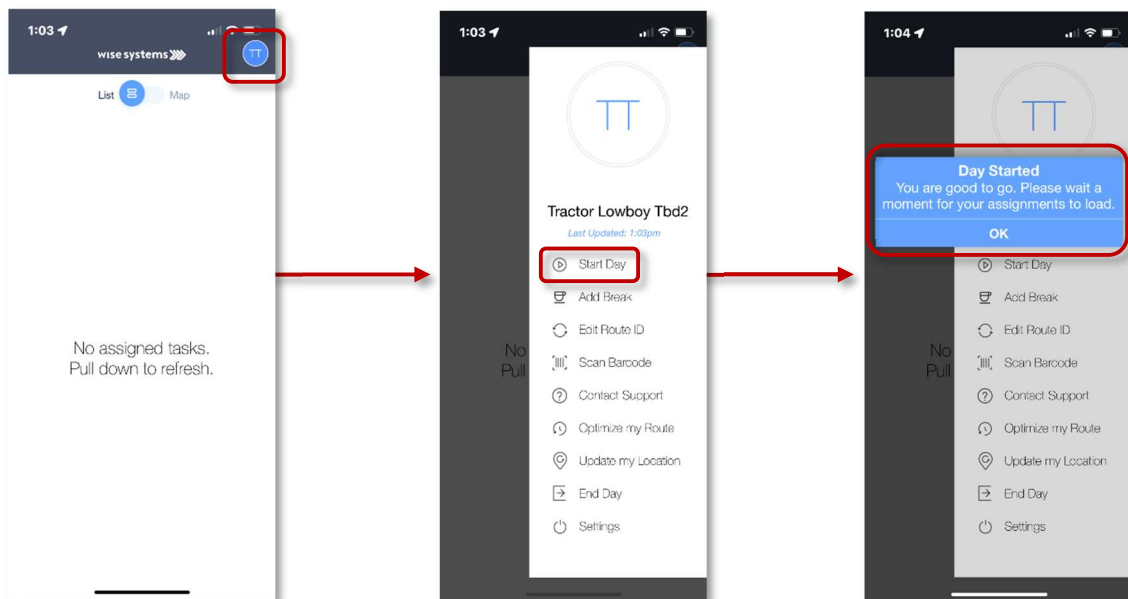
CTX Driver Application – Using iOS

Getting Started

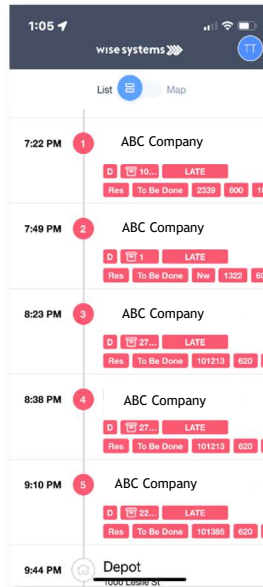
If you are using iOS, proceed to the App Store to download the Wise Systems App. Once downloaded, **log in** with your credentials; your username is your phone number (ex: 1112223333), and your password will be provided to you by your manager.



Once signed in, **tap** on your initials in the top right corner and **tap** on **Start Day**. A message will populate and your routes for the day will start to load in.



Once the routes are loaded, they will appear in order of delivery.

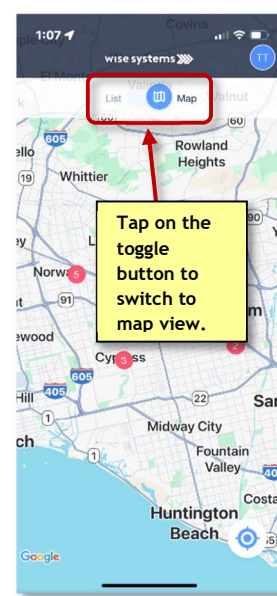
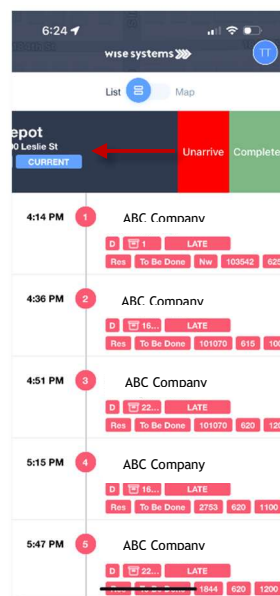
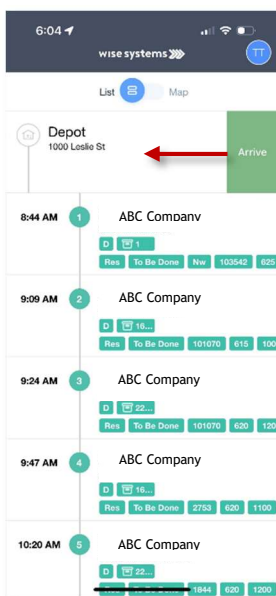


Starting Your Day at the Depot

To begin your day, **swipe left** on the **Depot** stop and tap **Arrive**. This is your check-in for the day and ensures your route is ready to go. You'll then see your delivery stops update—green means you're on time, yellow means at risk, and red means running late.

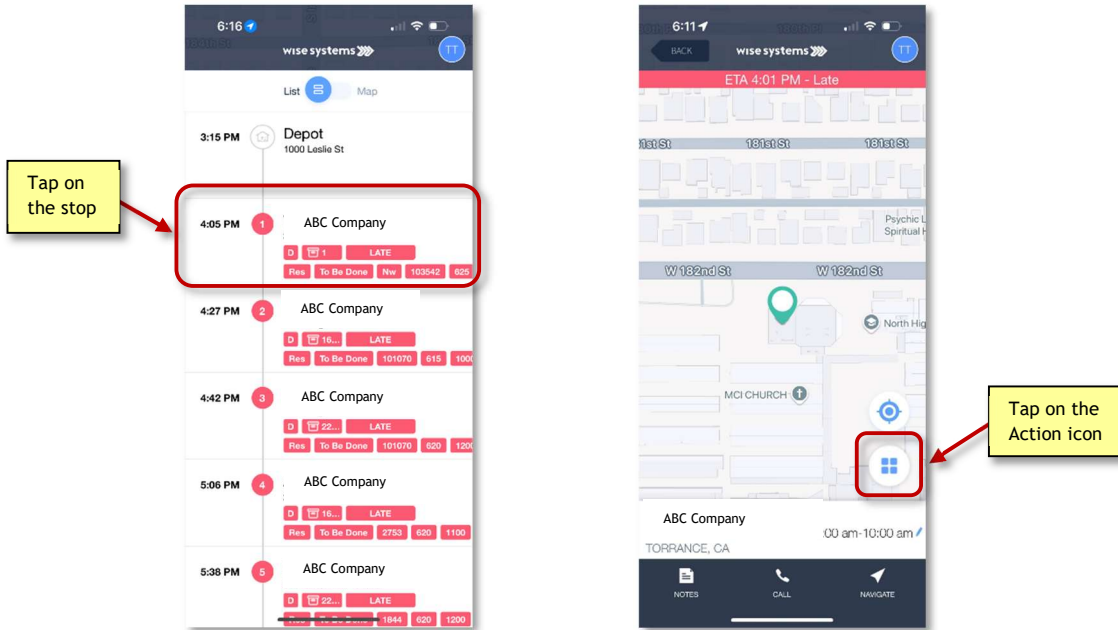
Note: You can also tap on the **toggle button** to see your routes on a map.

IMPORTANT: Before you leave the depot, swipe left again and tap **Complete**. This step officially marks you as en route. Without completing the depot stop, your route won't progress to the next deliveries.

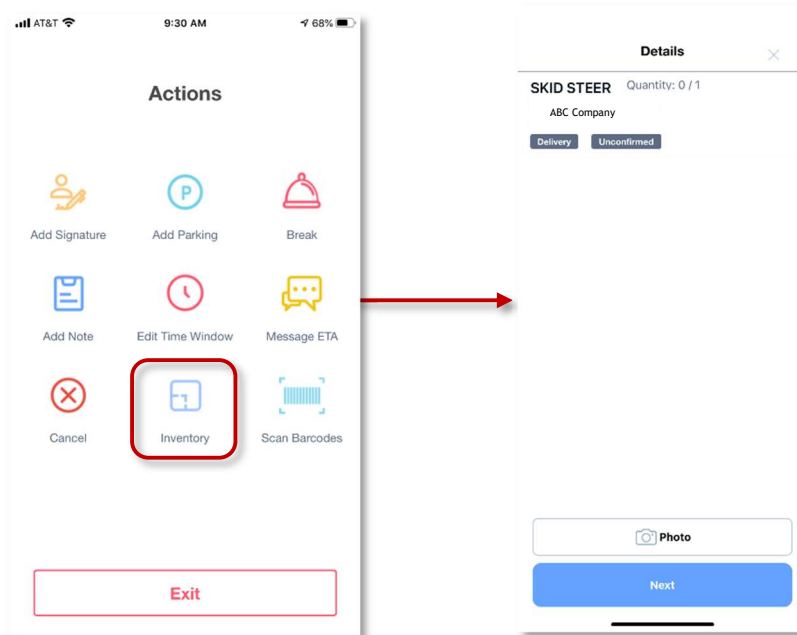


Review Inventory

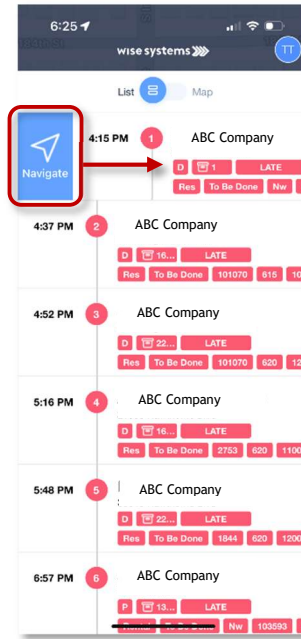
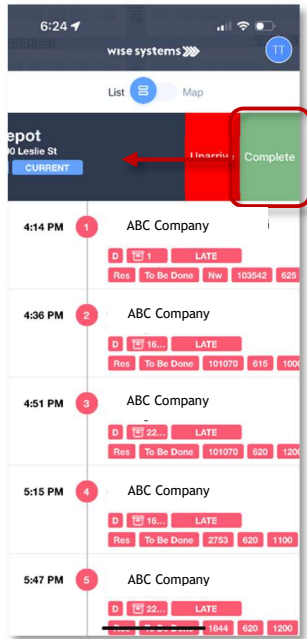
Review inventory for your stops by **tapping** on each stop. Once in the stop, **tap** on the **Action** icon (four squares in the bottom right corner).



In the **Action** menu, **tap** on the inventory button to view the equipment load for the stop. Repeat the same steps for each stop.

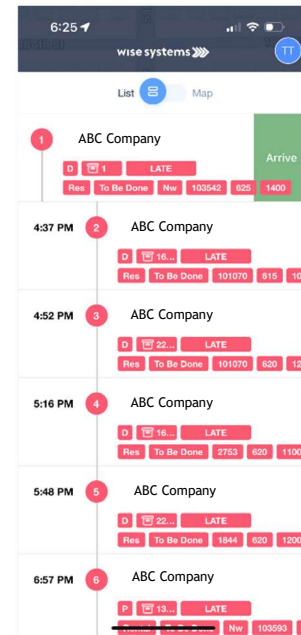
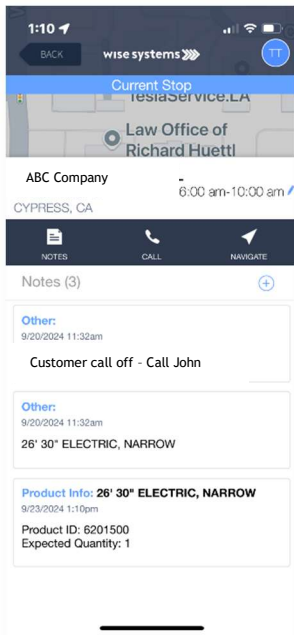


Back on the stops screen, **swipe right** and **tap on Complete** to leave the Depot. To Navigate to your first stop, **swipe left** and tap on **Navigate**.

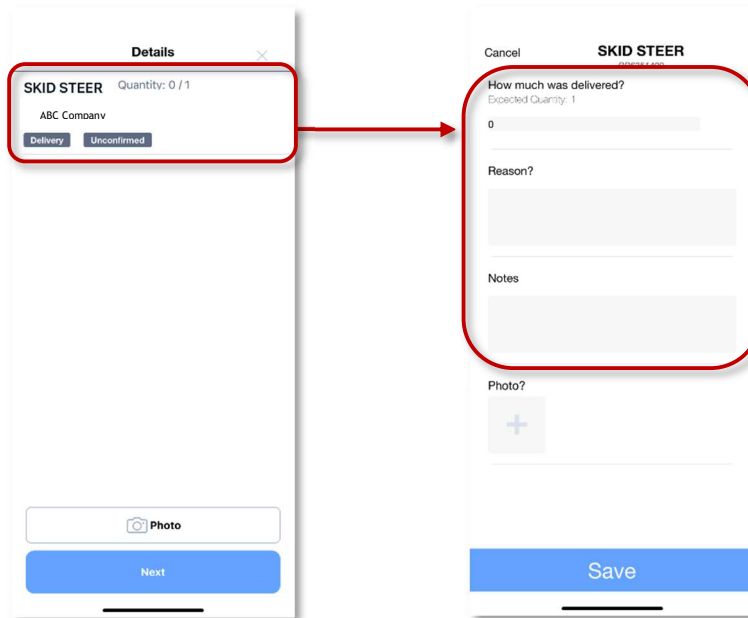


At the Delivery Site

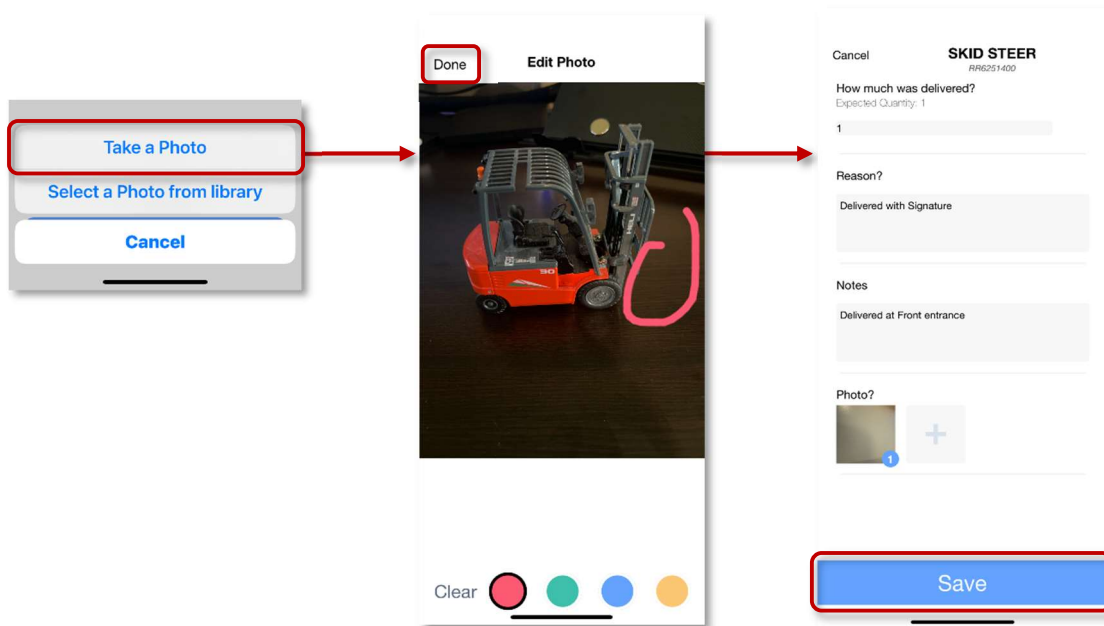
To view any notes or call the customer **tap** directly on the stop. Once you arrive on site, **swipe right** on the stop and tap on **Arrive**.



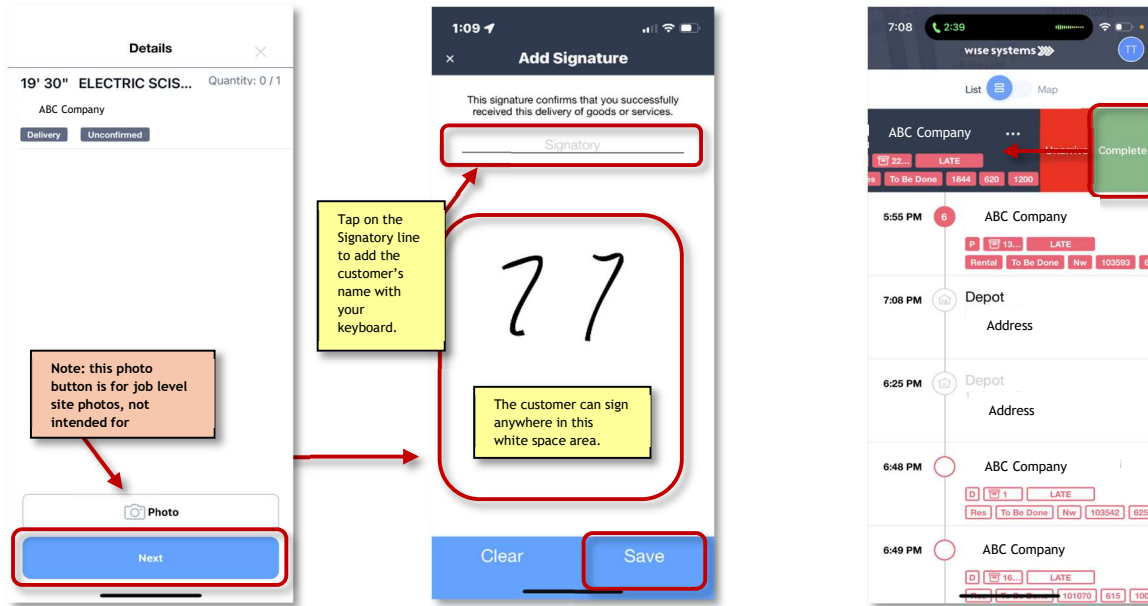
At the delivery site tap on the equipment being delivered. In the equipment screen select the quantity being delivered/picked up, the reason code, and add any notes.



While still in the equipment screen, tap on the + button to add photos of the equipment condition on delivery/pick up. If there are any damages or things of note you can draw on the image to notate it. Tap on done when all markups/images have been taken. Tap the Save button when all the details are completed.



Back in the Details screen tap on **Next** and get a signature from the customer for proof of delivery. Be sure to tap on the Signatory line to type out the Customer's name who signed for the delivery. Tap on **Save**. When all steps above have been completed, swipe right on the stop and tap **Complete**.



Wrapping up Your Day

Once all deliveries are complete, swipe left on the last Depot stop and tap **Arrive**. When you leave for the day, swipe left again on Depot and tap **Complete**.

IMPORTANT: Tap your initials in the top right corner and select **End Day**. This helps keep your next day's route clean and ready.

